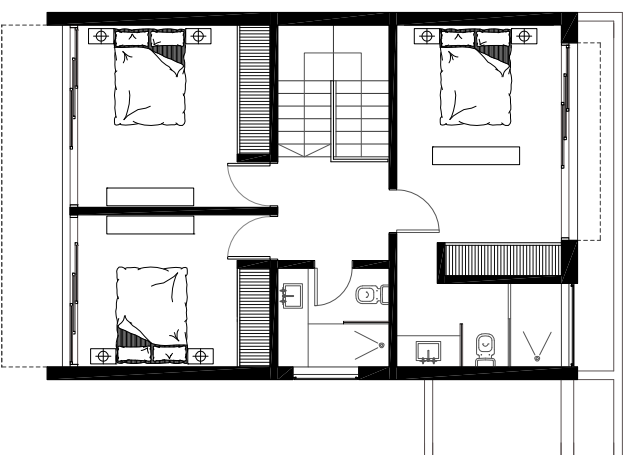
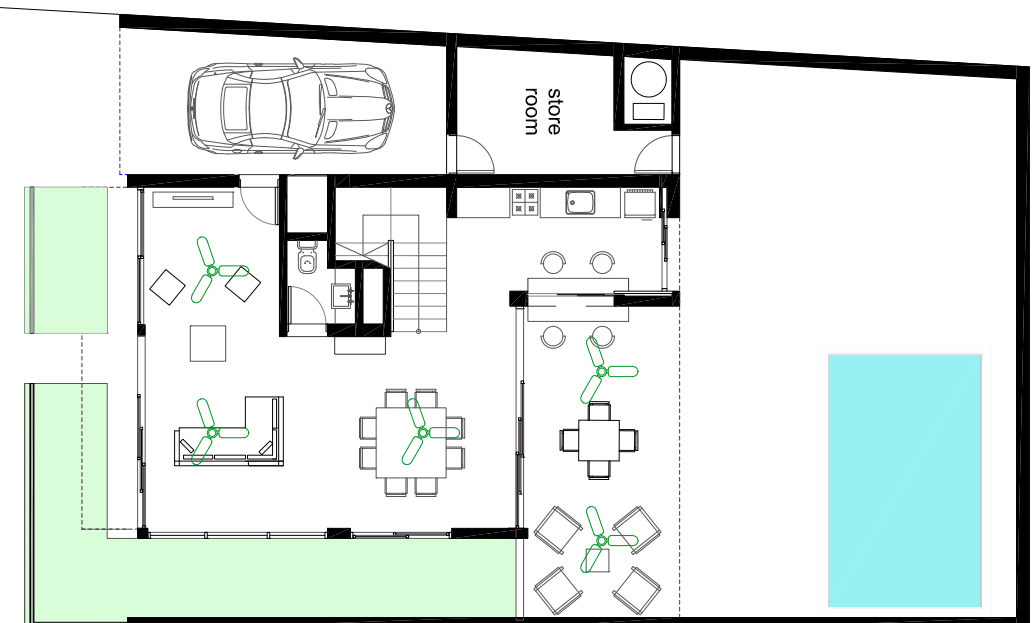


TAMARA



- Modifications:**
- 2 fans in the terrace
 - Garage fully enclosed with manual garage door
 - 3 rows of basic wooden shelves on the rear wall of the store room
 - outdoor shower
 - Lock with key to both side on the interior door
 - Light, 110V & 220V socket in the garage and the store room

MAIN AREAS	
GROUND FLOOR	
Living Room	37.63 m2
Kitchen	8.60 m2
Covered terrace	20.05 m2
Pool 5 x 2.70 m	13.50 m2
1st FLOOR	
Master bedroom	16.06 m2
Bathroom	6.25 m2
Bedroom with TV room	26.66 m2
Bathroom	4.49 m2
BUILT AREA	187.90 m2
Gardens, walkways	116.39 m2
TOTAL AREA	304.29 m2
LAND AREA	228.39 m2
US\$ 314.000.00	